

# Light & Dark

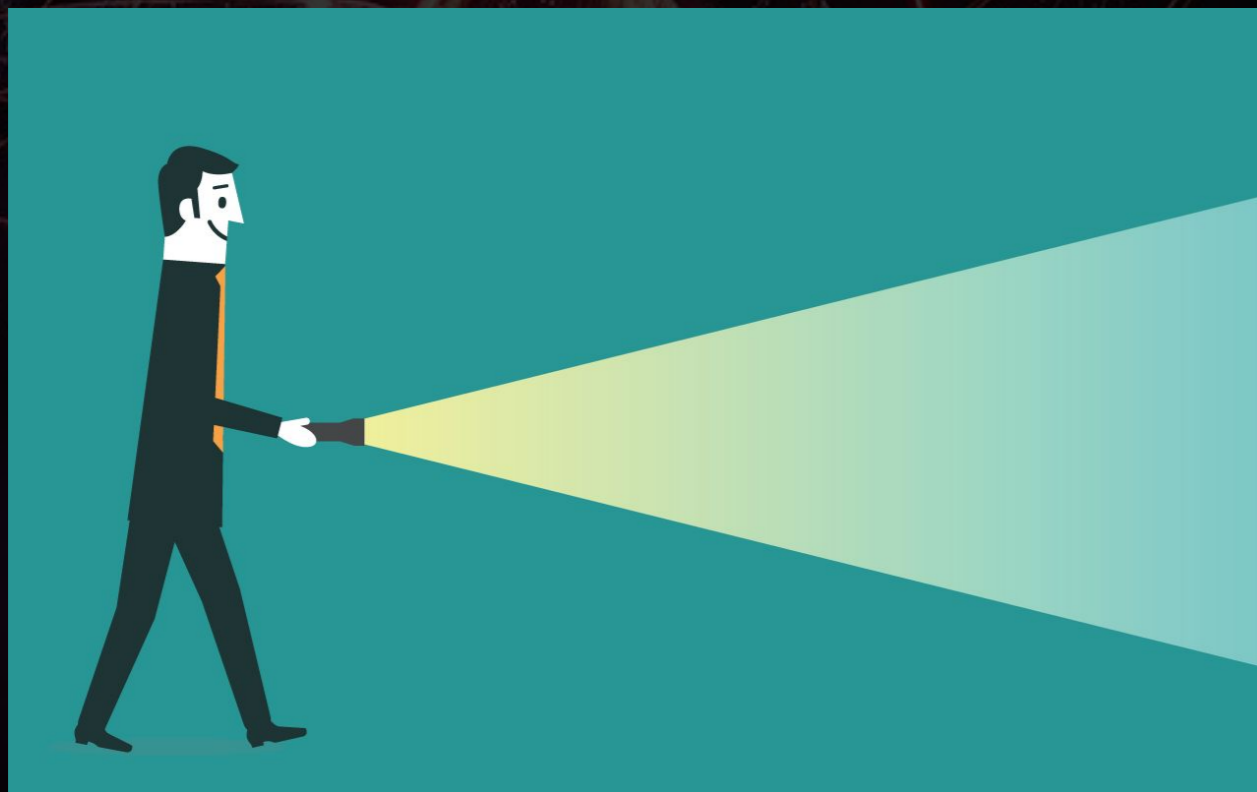






# Do you like the dark?

Scientists say that dark is the **absence** of light.



Absence is when something is not there, just like when you are absent from school.







# In the dark

Think about the last time you were in the dark.

Was it really dark? Or was there a nightlight, light from a TV or light from the stars?

If there is no light at all, we cannot see!







# Sources of light

Light always has a **source**.

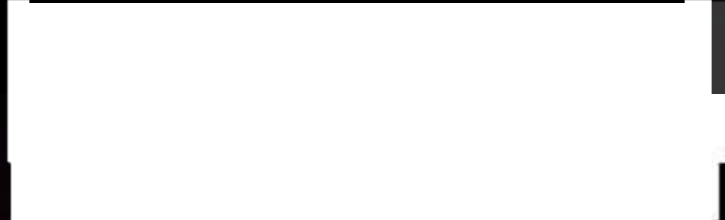
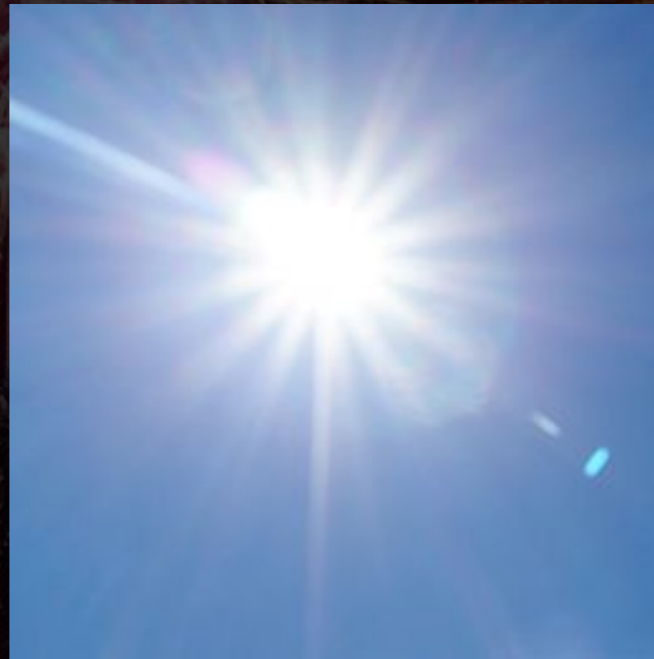
A light source is where the light begins.  
It is where the light comes from.

How many sources of light can you  
think of?





# Sources of light







# Reflectors of light

Don't be fooled. Not everything that is bright is a source of light.

Lots of people think that if something is shiny is is a source of light, but it is NOT!

Shiny things reflect light.

They don't make their own light.





# These things all reflect light

